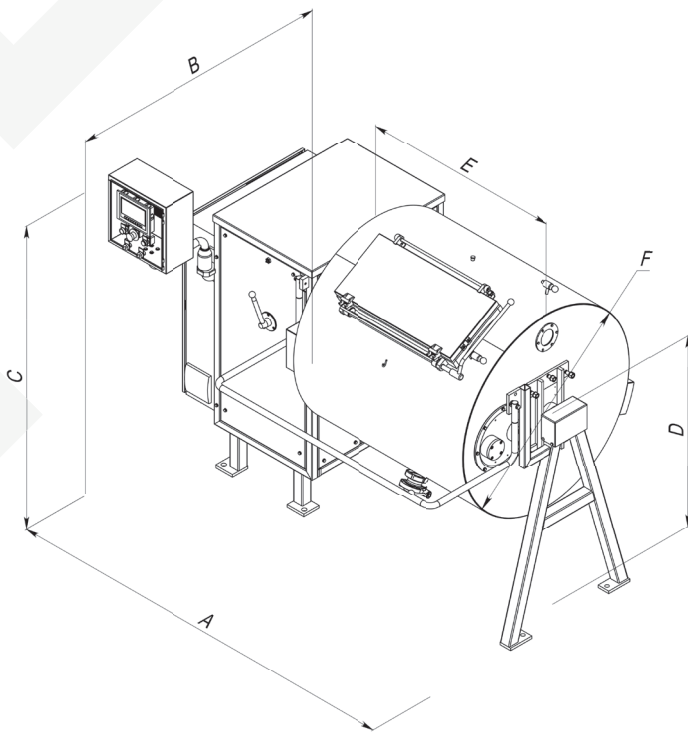


BC

Butter Churn





MATERIALS AND CONSTRUCTION:

- Drum made of stainless steel, sandblasted inside, glass-blasted outside.
- Large rectangular opening with cover and central closure (single-lever system) with possible positions for churning and for dry kneading.
- Bacteriologically safe cover seal of special rubber.
- Sight glass.
- Drain valve.
- Gear box: fitted in a frame with cladding.
- Consisting of:
 - ◆ Drive gear-motor;
 - ◆ Special mechanical clutch.
- Safety device: for smaller stand-alone butter churn units guard bar with safety shutdown.
- For larger butter making plants – according to the valid country-specific safety regulations and are optional.

CONTROL CABINET:

- Completely internally wired, with all necessary switches and relays.
- Frequency converter suitable for the gear motor unit above.
- Operation elements: Pot-meter with speed indicator.
- Start/stop.

TECHNICAL DATA

Butter churn for batch production of traditional homogenous butter

| | |
|-----------------------|-----------------|
| Capacity, L per batch | up to 3 000 |
| Cream fat content, % | 35-42 |
| Material | stainless steel |
| Voltage, V | 400 |
| Frequency, Hz | 50 |
| Pneumatics, bar | 6 |

| Type | Batch capacity | Cream | Butter | A | B | C |
|------|----------------|-------------|----------|------|------|------|
| BC | L | L per h | kg up to | mm | mm | mm |
| BC05 | 500 | up to 200 | 100 | 1810 | 1380 | 1560 |
| BC1 | 1000 | up to 400 | 200 | 2100 | 1600 | 1700 |
| BC2 | 2000 | up to 800 | 400 | 3200 | 2100 | 2000 |
| BC3 | 3000 | up to 1 200 | 600 | 3500 | 2000 | 2300 |